

TECH PACK

MUSIC IS BETTER LIVE. *AT THE CLYDE*



ClydeTheatre.com
1808 Bluffton Road, Fort Wayne, IN 46809

07/09/2025
v2.9



WELCOME TO THE CLYDE

In this tech pack, we hope to provide all the information needed for you to have an enjoyable and stress-free day here at The Clyde.

The venue was designed with the artist in mind, making it easy for your production to enter our building and put on a successful show for your fans.

Since reopening in 2018 following a \$9 million renovation, this art deco masterpiece has been transformed into a premier entertainment venue that has played host to some of the world's top touring talent.

FEATURES OF THE CLYDE INCLUDE:

- 21,000-square-foot main performance hall
- 7,000-square-foot dressing rooms & hospitality lounge
- Industry-standard sound and lighting systems
- On-site restaurant and coffee shop available for catering, hospitality, and select VIP experiences



ClydeClubRoom.com



CrescendoCoffeeandMore.com

CONTACTS

EXECUTIVE DIRECTOR

Gregg Coyle

1 (260) 747-0989 x8591

gregg@clydetheatre.com

PRODUCTION MANAGER

Drew Consalvo

1 (260) 747-0989 x1809

1 (818) 749-4609

drew@clydetheatre.com

BOX OFFICE MANAGER

Sara Trombley

1 (260) 747-0989 x8576

sara@clydetheatre.com

OPERATIONS MANAGER

(Merch/Security/Hospo)

DJ Campbell

1 (260) 747-0989 x8563

1 (703) 473-4361

dj@clydetheatre.com

MARKETING

Andrew Reinfeld

1 (260) 747-0989 x8827

1 (310) 606-1664

andrew@clydetheatre.com

IMPORTANT INFORMATION

BOX OFFICE / SHIPPING / VENUE ADDRESS

The Clyde Theatre

1808 Bluffton Road, Fort Wayne, IN 46809

1 (260) 747-0989

PLEASE NOTE BOX OFFICE HOURS FOR SHIPMENTS

12PM–6PM Monday to Thursday

10AM–6PM Friday

2 hours prior to doors on weekends

LOADING DOCK / VAN & TRAILER / BUS PARKING

Loading docks and the production lot are accessed from the rear of the building. (See map on page 3)

GPS COORDINATES

41.0522° N, 85.1614° W

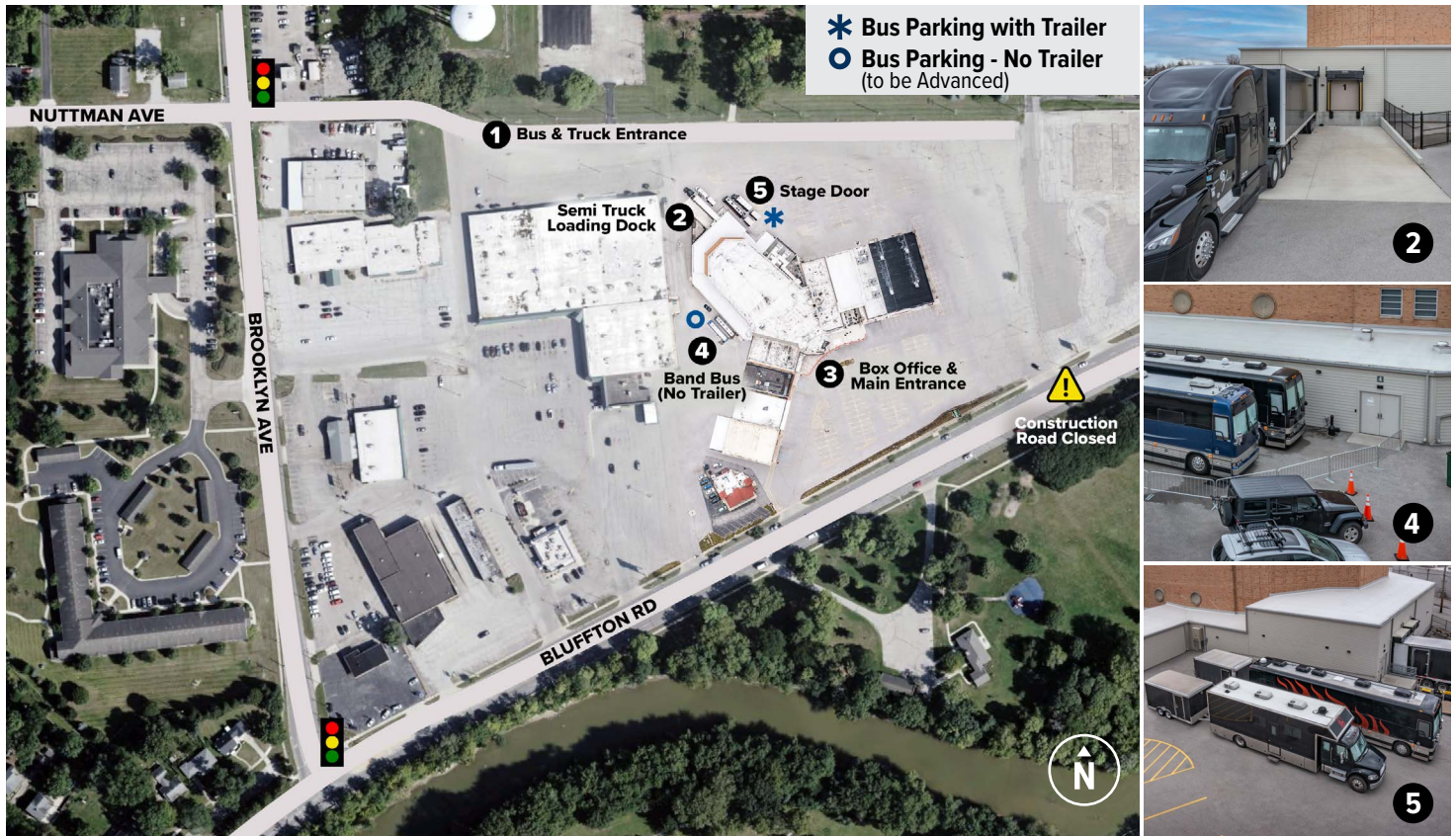
PARKING INFORMATION

The Clyde is located at 1808 Bluffton Road, Fort Wayne, IN 46809 between Broadway and Brooklyn Avenue. We have ample parking for five tour buses with shore power. Two semi trucks can park at our loading dock, with additional box truck parking available.

There is no truck or bus access from Harrison or Fairfield coming from the north due to low bridge clearance.

NOTICE: ONGOING ROAD CONSTRUCTION ON BLUFFTON ROAD & BRIDGE HAS ALTERED ROUTES TO THE VENUE.

Please be aware of detours and alternate traffic routes to enter the Clyde's truck, bus & rear stage entrances.



Arriving from the South/West on Bluffton Road:

- Turn left (North) at Brooklyn Avenue and then right (East) at the next traffic light (Nuttman Avenue).
- Follow the access road through the parking lot until you arrive at the loading dock/stage door area at the rear of The Clyde Theatre.

Arriving from South/West on I-69 / US 24:

- Exit Jefferson Blvd to Engle Road.
- Take Engle Road East to Ardmore Avenue and turn left (North) to Nuttman Avenue.
- Turn right (East) on Nuttman continue through the light at Brooklyn Avenue and through the parking lot until you arrive at the loading dock/stage door area at the rear of The Clyde Theatre.

Arriving from the North (Downtown Fort Wayne):

- Take Broadway South to Taylor Street.
- Turn right (West) on Taylor. Continue to Brooklyn Avenue.
- Turn left (South) on Brooklyn and continue to Nuttman Avenue.
- Turn left (East) on Nuttman until you arrive at the loading dock/stage door area at the rear of The Clyde Theatre.

Arriving from points East and South (US 27) Ferguson Road West to Bluffton Road.

- Turn right (North) on Bluffton Road to Brooklyn Avenue.
- Turn left (North) at Brooklyn Avenue and then right (East) at the next traffic light (Nuttman Avenue).
- Follow the access road through the parking lot until you arrive at the loading dock/stage door area at the rear of The Clyde Theatre.

TECHNICAL DETAILS

LOAD IN	Access from two truck docks at stage level — 20' push to stage. Buses with trailers unload on the east side of the loading dock (see map on page 3), up the ramp. Lower-than-dock-height platform available for box truck unloading.
STAGE ACCESS	Accessible from loading docks, ramp, and artist doors. Access to the stage from overhead doors stage left and stage right. They are closed for performances.
LOADING DOOR DIMENSIONS	13'10" high x 8' wide
STAGE DOOR DIMENSIONS	13'10" high x 8' wide
STAGE WIDTH	70' downstage 38' between drapes 38' upstage
STAGE DEPTH	32.5'
STAGE HEIGHT	4'
STAGE TYPE	Concrete
TRIM HEIGHT	27' to truss
GRID HEIGHT	31.5' from floor to steel beams
RISERS	3x 8'x8' StageRight risers, non-rolling. Please advance needs.
DEAD CASE STORAGE	Ample dead case storage on loading dock.
DISTANCE TO FOH	70'
CABLE RUN TO FOH	100' — all cable will run through 12" cable conduit from stage to FOH. Hatches are located center of house at downstage lip and FOH location.
BACKLINE	There is no backline in-house.
LABOR	Our house crew will act as loaders, stagehands, and technicians upon request. Please advance all labor needs at least two weeks before event date.
RIGGING	All rigging must be approved by production manager in advance of event load in. Riggers are provided per advance. Rigging details available per advance. Details on page 11 and 12.
FORKLIFT	There is no forklift available on-site. Stacking motor available on loading dock.
CONFETTI	Biodegradable confetti is permitted. Mylar and metal confetti are not permitted. There is a \$500 cleanup charge for all confetti.
CRYO	Please give production manager five days' notice if you require CO ₂ .
PYRO	Pyro and open flame are permitted at The Clyde but must be advanced and require prior written approval by general manager. A permit from the City of Fort Wayne Fire Department is required. The permit process may take some time, so please contact production manager as soon as possible.
HAZE	Production manager must be notified before any haze can be used in the building, including in rehearsals and soundcheck.
SOFT GOODS	House blacks on upstage and wings. Any artist draperies, banners, and backdrops must have active fire certificate.
SPOTLIGHTS	There are no spotlights in-house. Spotlights can be rented by venue upon request at artist cost.

GUEST / HOUSE / STAGE POWER

RATING	LOCATION	TERMINATION	USER
Lighting 400 amps / 3-phase 120/208V	Upstage right Pass-through on lighting distro	Camlock	House lights, touring lights, video
Sound 200 amps / 3-phase 120/208V	Downstage left	Camlock	Touring audio

AUDIO SPECIFICATIONS

LEFT/RIGHT MAIN PA

20 x JBL VTX A12 Dual 12" Line Array Loudspeaker

SUBS

8 x JBL VTX G28 Dual 18" Subwoofer under stage

FRONT FILL

7 x JBL VT4886 Subcompact Passive 3-way Line Array

DELAY

5 x JBL VRX932LA 12" Bi-amplified 2-way Line Array

AMPS

14 x Crown I-Tech 4x3500HD 4-channel, 4000W @ 4Ω

4 x Crown I-Tech 12000HD 2-channel, 4500W @ 4Ω

1 x BSS Soundweb London BLU-160

STAGE MONITORING

12 x JBL VTX M22 Dual 12" Stage Monitor on 8 mixes

2 x JBL VTX F35/95 Dual 15" 3-way Loudspeaker

1 x JBL VTX F18S 18" Compact Single Subwoofer

AUDIO CONSOLES

2x Avid VENUE S6L-32D-192, FoH & Monitors

Avid VENUE Stage 64 — 64 analog in / 24 analog out / 8 digital out

WIRELESS MICS AND IN-EARS

4 x Shure Axient AD4DUS

8 x Shure Axient AD2 w/ 4 x SM58, 4 x KSM8, 2 x Telefunken M81-WH, 2 x KSM11

4 x Shure P10T G10

8 x Shure P10R G10

MICROPHONES

SHURE

12 x SM57, 2 x Beta 57A, 10 x SM58, 2 x Beta 58A, 2 x Beta 181,
2 x Beta 87A, 4 x KSM141, 4 x KSM137, 6 x Beta 98AMP, 4 x KSM32,
2 x KSM 44A, 2 x Beta 52A, 2 x Beta 91A, 3 x Beta 98H, 6 x Beta 56A,
3 x Twinplex TH53, 2 x SM81, 2x KSM313, 4x 545
2x NXN2, 2x NXN5, 3x NXN6, 1x SM39

TELEFUNKEN

2 x M81-WH, 4 x M80, 4 x M81, 8 x M81-SH, 4 x M80-SH,
6 x M60 FET, 2 x M82

SENNHEISER

4 x MD 421, 2 x e 906, 4 x e 945, 3x e 604

AUDIO-TECHNICA

3 x ATM 230, 1 x ATM 250, 2 x ATM 450, 1 x ATM 650, 2 x ATM 2021

COUNTRYMAN

4 x E6

RADIAL

4 x JDI, 4 x J48, 4 x JDI Stereo

WHIRLWIND

3 x PC DI

Full complement of K&M microphone stands

LIGHTING SPECIFICATIONS

EUROTRUSS

2 x Pre-rig 40' Trussing
10x10 40' Box

STAGEMAKER

13x Half-Ton Chain Hoists

MOTION LABS

Lighting Distro w/ Cam Throughs

CHAMSYS

MQ500 Stadium Console

CHAUVET

4x Rogue R3 Spots
6x Rogue R3X Wash

MARTIN

8 x MAC Quantum Profile
2 x MAC Encore Performance WRM
8 x MAC Quantum Wash
4 x Atomic 3000 LED
24 x Rush PAR 2

CLEAR-COM

2-channel Wired Coms at SL, SR, FOH, and spot positions

IN-HOUSE VIDEO PROJECTION

Digital Projection Highlite Laser II 13k Projector
Decimator MD Cross V2
Da-Lite 13.3' H x 23.67' W Motorized Screen—upstage center
Roland V-1HD 4-CH Video Switcher

See lighting patch and plot on pages 11 and 12.



SECURITY / CREDENTIALS / MEET & GREET / SETTLEMENT / CAMERA POLICY

SECURITY

To provide the safest and most comfortable experience for our artists and patrons, all working personnel, guests, and artists will be expected to pass through a metal detector before entering the building. Please understand that our only concern is preventing weapons from entering the building, and your privacy is of the utmost importance to us. Our backstage is your home, and we encourage you to go about your business as you would anywhere else. Please let the production manager know if you have any questions regarding the metal detector or any security procedures at The Clyde.

SECURITY MEETING

A security meeting with the executive director, production manager, and a tour representative will take place one hour prior to doors.

CREDENTIALS

The Clyde will honor touring credentials and can provide house passes upon request.

GUEST LIST

All guest list names must be turned in to the production manager or other backstage venue representative no later than 30 minutes prior to doors opening.

VIP or MEET & GREET

All VIP, meet & greet, and early entrants must be advanced with the production manager two weeks prior to show. There is a \$200 fee for any VIP, meet & greet, or early-entry programs that require security/venue staff.

PHOTO POLICY

All SLR or DSLR cameras with detachable lenses in the venue must have a photo pass and prior written consent of artist management. We will honor all touring policies. We can provide photo passes upon request.

VIDEO POLICY

Any film crew or video shoot details must be advanced prior to the show. A release must be signed for any video recording.

BARRICADE

We have Mojo-style barricades in-house for front-of-stage and FOH areas.

SETTLEMENT

All cash requests must be made two weeks in advance. No cash is on hand unless otherwise advanced.

SMOKING

There is a strict no-smoking policy at The Clyde Theatre. Smoking is allowed only in designated areas outside the building.

CATERING / HOSPITALITY / MERCHANDISE / RUNNERS

CATERING	The Clyde provides catering through our on-site restaurant, The Club Room. We can also work with a number of preferred local vendors to fulfill catering needs with advance notice. Catering is set up in the greenroom located next to dressing room #4.
HOSPITALITY	All hospitality needs are to be advanced with production manager/hospitality coordinator and are per budget, unless otherwise noted. Please submit all hospitality riders two weeks prior to your show during production advance.
LIQUOR	In accordance with the Indiana Alcohol & Tobacco Commission, all liquor (including backstage liquor) must be purchased in-house from The Clyde Theatre. All liquor orders should be placed at least one week in advance.
DRESSING ROOMS	We have four private dressing rooms and one greenroom located backstage on the first floor. Dressing room curfew is one hour after load-out is complete.
DIMENSIONS	Dressing Room #1 — 14' x 20', Dressing Room #2 — 22' x 20', Dressing Room #3 — 20' x 22', Dressing Room #4 — 14' x 20', Greenroom — 16' x 33'
DRESSING ROOM ACCESS	Dressing rooms are accessed backstage from entrance in bus lot.
SHOWERS	Dressing rooms #2 and #3 have showers.
LAUNDRY	We have a clothes washer and dryer located in the utility closet backstage.
WI-FI	Private production Wi-Fi is provided. Password is located on the wall in each dressing room and in greenroom.
CATERING / CREW	Hospitality lounge and catering room is located backstage next to dressing room #4.
RUNNERS	All runners are per advance and in personal vehicles. Any vehicle rentals will be at artist cost.
RESTAURANTS	We have an on-site restaurant and coffee shop, The Club Room and Crescendo Coffee & More, available. There are also several dining options in the surrounding area. Local menu books are provided in each hospitality lounge.
MASSAGE THERAPISTS	Please let us know if you are in need of a massage therapist, and we can arrange for one day of show.
EMT / MEDICAL / POLICE	We will have one EMT on staff unless otherwise noted. Police are on-site at every show.
MERCHANDISE	The house cut is per contract. House seller rate will be discussed during advance. Please advance with the production manager if you are in need of a seller. Our in-house merchandise representative will count in/out for each show. Please let us know if you have a specific time that you'd like to count in. Please advance any cash needs at least two weeks in advance.

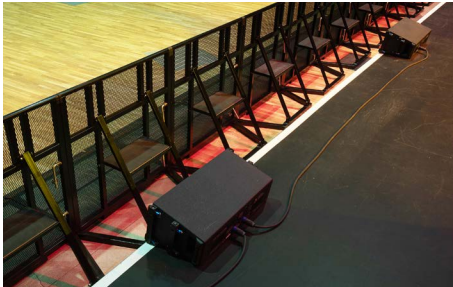
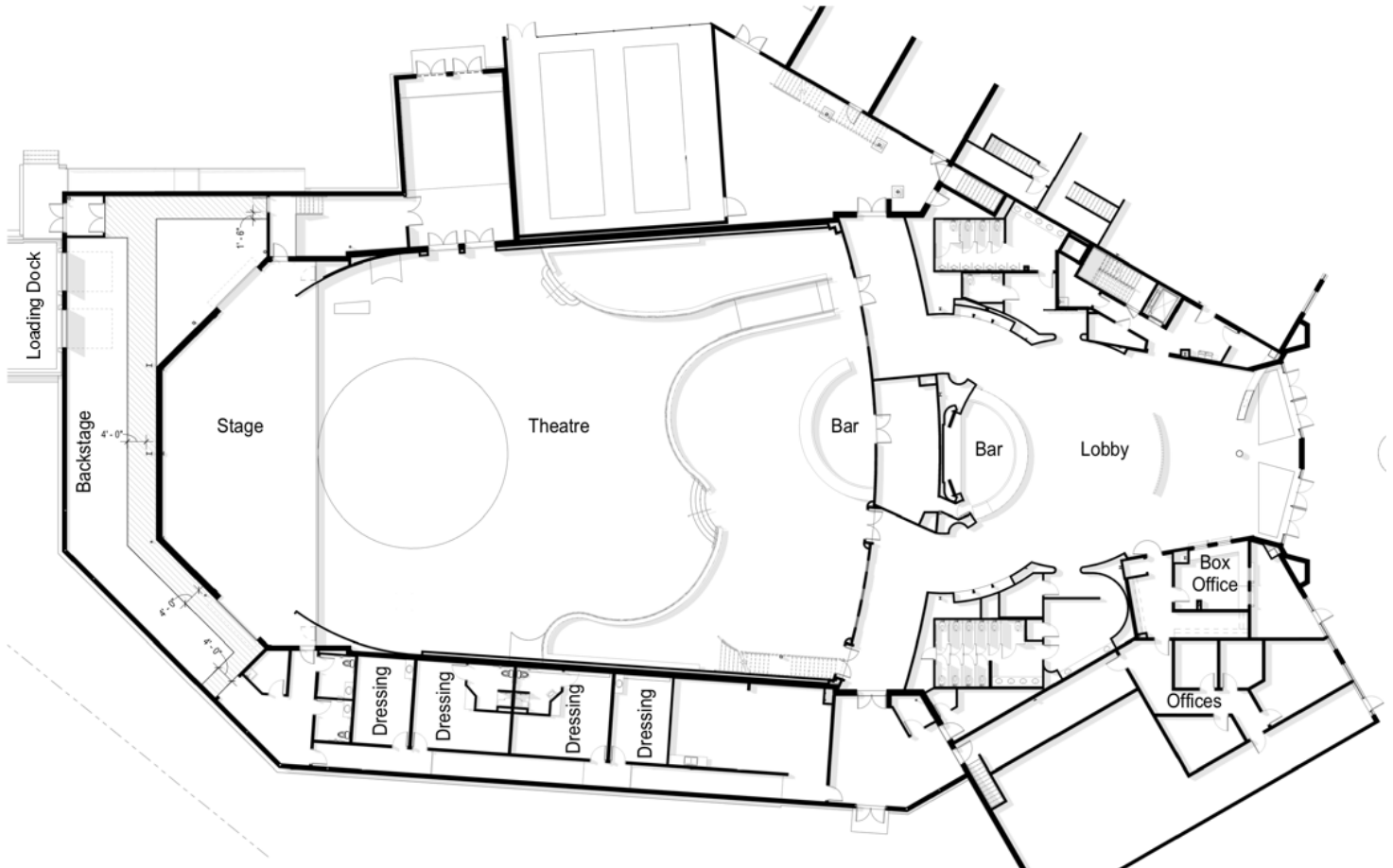
Sweetwater®

Music Instruments & Pro Audio

Visit our partners at Sweetwater while you're in town,
located just seven miles from The Clyde Theatre.

5501 US Hwy 30 W, Fort Wayne, IN 46818 | (800) 222-4700

CLYDE THEATRE FLOOR PLAN



HOTEL RECOMMENDATIONS

WYNDHAM GARDEN HOTEL

Jennifer Gnau — Director of Sales
5750 Challenger Parkway, Fort Wayne, IN 46818
(260) 999-6040 | sales@wyndhamgardenfw.com

HILTON FORT WAYNE AT THE GRAND WAYNE CONVENTION CENTER

Dyanne Hower — Sales Manager
1020 S. Calhoun Street, Fort Wayne, IN 46802
(260) 422-4002 | dhower@hiltonfortwayne.com

COURTYARD MARRIOTT DOWNTOWN FORT WAYNE

Haley Johns — Sales Manager
1150 South Harrison Street, Fort Wayne, IN 46802
(260) 230-6377 | hjohns@zmchotels.com

HOLIDAY INN EXPRESS & SUITES

Blanch Abbott — Director of Sales
5915 Ellison Road, Fort Wayne, IN 46804
(260) 408-6611 | blanch@hiewtwayne.com

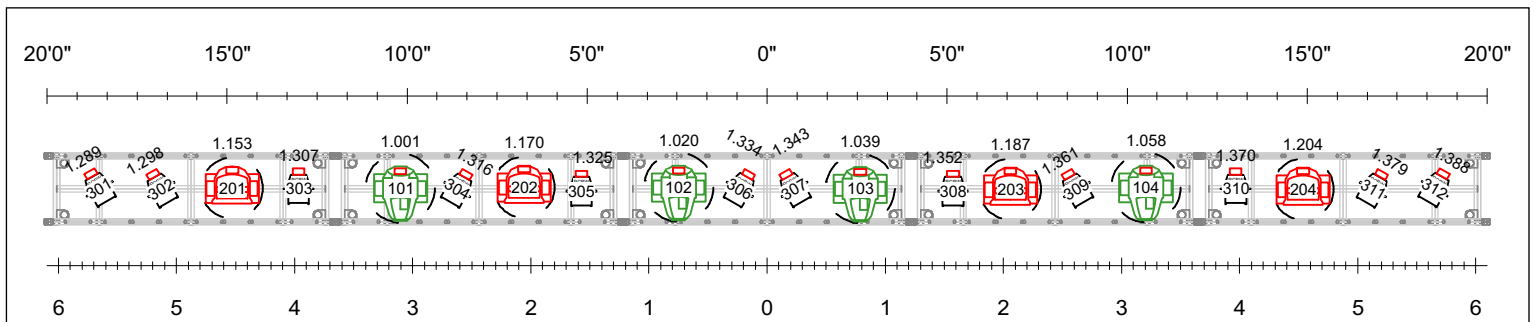
CLYDE THEATRE LIGHTING PATCH

HEAD NO.	DMX	POSITION	MANUFACTURER	MODEL	MODE
101	1-001	Upstage Truss	Martin	MACQuantumProfile	Basic
102	1-020	Upstage Truss	Martin	MACQuantumProfile	Basic
103	1-039	Upstage Truss	Martin	MACQuantumProfile	Basic
104	1-058	Upstage Truss	Martin	MACQuantumProfile	Basic
105	1-077	Midstage Truss	Martin	MACQuantumProfile	Basic
106	1-096	Midstage Truss	Martin	MACQuantumProfile	Basic
107	1-115	Midstage Truss	Martin	MACQuantumProfile	Basic
108	1-134	Midstage Truss	Martin	MACQuantumProfile	Basic
201	1-153	Upstage Truss	Martin	MACQuantumWash	Basic
202	1-170	Upstage Truss	Martin	MACQuantumWash	Basic
203	1-187	Upstage Truss	Martin	MACQuantumWash	Basic
204	1-204	Upstage Truss	Martin	MACQuantumWash	Basic
205	1-221	Midstage Truss	Martin	MACQuantumWash	Basic
206	1-238	Midstage Truss	Martin	MACQuantumWash	Basic
207	1-255	Midstage Truss	Martin	MACQuantumWash	Basic
208	1-272	Midstage Truss	Martin	MACQuantumWash	Basic
301	1-289	Upstage Truss	Martin	RushPar2Zoom	9CH
302	1-298	Upstage Truss	Martin	RushPar2Zoom	9CH
303	1-307	Upstage Truss	Martin	RushPar2Zoom	9CH
304	1-316	Upstage Truss	Martin	RushPar2Zoom	9CH
305	1-325	Upstage Truss	Martin	RushPar2Zoom	9CH
306	1-334	Upstage Truss	Martin	RushPar2Zoom	9CH
307	1-343	Upstage Truss	Martin	RushPar2Zoom	9CH
308	1-352	Upstage Truss	Martin	RushPar2Zoom	9CH
309	1-361	Upstage Truss	Martin	RushPar2Zoom	9CH
310	1-370	Upstage Truss	Martin	RushPar2Zoom	9CH
311	1-379	Upstage Truss	Martin	RushPar2Zoom	9CH
312	1-388	Upstage Truss	Martin	RushPar2Zoom	9CH
313	1-397	Midstage Truss	Martin	RushPar2Zoom	9CH
314	1-406	Midstage Truss	Martin	RushPar2Zoom	9CH
315	1-415	Midstage Truss	Martin	RushPar2Zoom	9CH
316	1-424	Midstage Truss	Martin	RushPar2Zoom	9CH
317	1-433	Midstage Truss	Martin	RushPar2Zoom	9CH
318	1-442	Midstage Truss	Martin	RushPar2Zoom	9CH
319	1-451	Midstage Truss	Martin	RushPar2Zoom	9CH
320	1-460	Midstage Truss	Martin	RushPar2Zoom	9CH
321	1-469	Midstage Truss	Martin	RushPar2Zoom	9CH
322	1-478	Midstage Truss	Martin	RushPar2Zoom	9CH
323	1-487	Midstage Truss	Martin	RushPar2Zoom	9CH
324	1-496	Midstage Truss	Martin	RushPar2Zoom	9CH
401	2-001	Midstage Truss	Martin	AtomicLED3000	14CH
402	2-015	Midstage Truss	Martin	AtomicLED3000	14CH
501	2-029	Midstage Truss	Chauvet	Strike4Array	4CH
502	2-033	Midstage Truss	Chauvet	Strike4Array	4CH
601	2-037	FOH Truss	Martin	MacEncorePerf	38CH
602	2-075	FOH Truss	Martin	MacEncorePerf	38CH
701	2-113	FOH Truss	Chauvet	RogueR3XWash	21CH
702	2-134	FOH Truss	Chauvet	RogueR3XWash	21CH
703	2-155	FOH Truss	Chauvet	RogueR3XWash	21CH
704	2-176	FOH Truss	Chauvet	RogueR3XWash	21CH
705	2-197	FOH Truss	Chauvet	RogueR3XWash	21CH
706	2-218	FOH Truss	Chauvet	RogueR3XWash	21CH
403	2-243	Floor	Martin	AtomicLED3000	14CH
404	2-257	Floor	Martin	AtomicLED3000	14CH
801	2-271	Floor	Chauvet	RogueR3Spot	25CH
802	2-296	Floor	Chauvet	RogueR3Spot	25CH
803	2-321	Floor	Chauvet	RogueR3Spot	25CH
804	2-346	Floor	Chauvet	RogueR3Spot	25CH
901	2-371	Floor	Chauvet	Amhaze Stadium	2CH
902	2-373	Floor	Chauvet	Amhaze Stadium	2CH
1001	2-239	FOH Truss	Chauvet	OvationE260WWIP	2CH
1002	2-241	FOH Truss	Chauvet	OvationE260WWIP	2CH

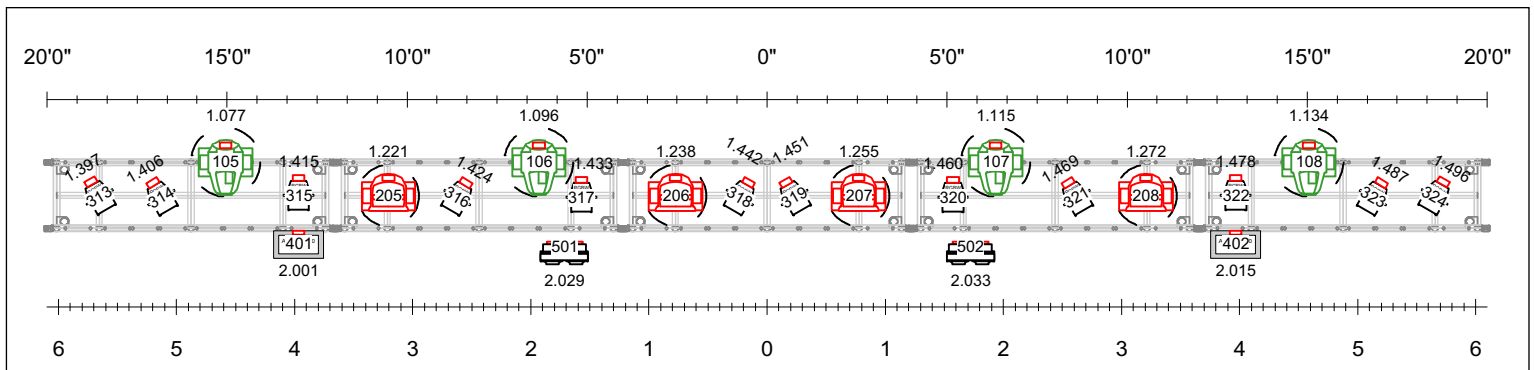
Fixtures 1001-1002 House Logo Fixtures

CLYDE THEATRE LIGHTING PLOT

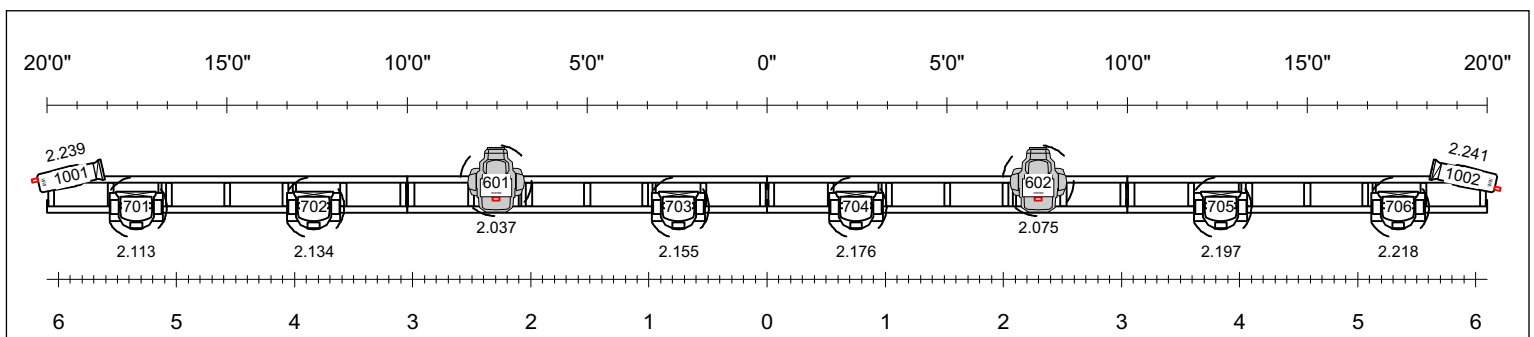
US Truss (27' 2" from DS Edge)



MS Truss (14' 8" from DS Edge)



FOH Truss (-20' 6" from DS Edge)



LEGEND



MAC Encore Performance WRM



Martin Mac Quantum Profile



Martin Mac Quantum Wash



Martin RUSH PAR 2 RGBW Zoom



Atomic 3000 LED



Chauvet Strike 4 Array



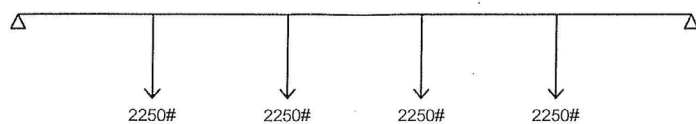
Chauvet Rogue R3X Wash

ROOF PLAN — PLATFORM RIGGING

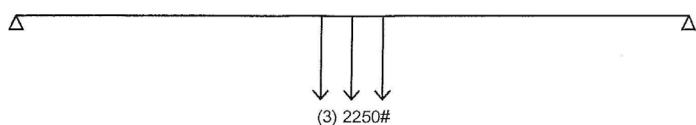


MAXIMUM ALLOWABLE RIGGING HOIST LOADS

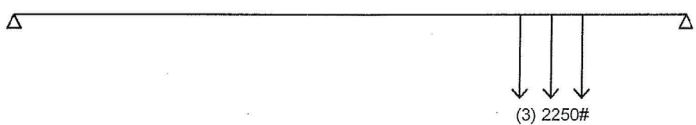
BEAM B1, B2 & B3
LOADS EVENLY
SPACED



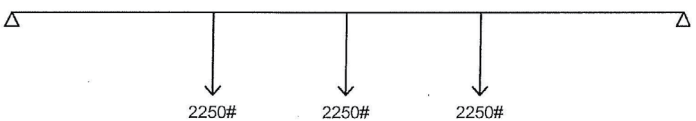
BEAM B1, B2 & B3
LOADS @ CENTER
OF SPAN



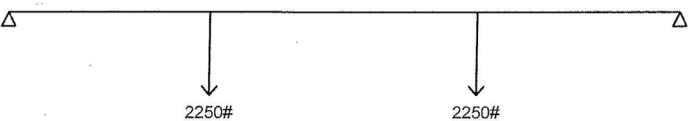
BEAM B1, B2 & B3
LOADS @ END
OF SPAN



TRUSS T1
LOADS @ BEAM
B1, B2 & B3



TRUSS T2 & T3
LOADS @ BEAM
B1 & B3



The
Clyde
Theatre
Powered by [Sweetwater](#)

[ClydeTheatre.com](#)

1808 Bluffton Road, Fort Wayne, IN 46809

